

2017



		.....	1
		.....	1
1.	1-1	.....	1
2.	1-2	.....	6
3.	1-3	.....	11
4.	1-4	.....	16
5.	1-5	.....	20
6.	1-6	.....	25
7.	1-7	.....	30
8.	1-8	.....	35
9.	1-9	.....	40
10.	1-10	.....	45
11.	1-11	.....	50
12.	1-12	.....	53
13.	1-13	.....	56
14.	1-14	.....	59
15.	1-15	.....	62
16.	1-16	.....	65
17.	1-17	.....	68
18.	1-18	.....	71
19.	1-19	.....	74
20.	1-20	.....	77
		.....	80
		.....	80
1.	2-1	.....	80
2.	2-2	.....	83
3.	2-3	.....	85
4.	2-4	.....	87
5.	2-5	.....	89
6.	2-6	.....	91
7.	2-7	.....	93

8.	2-8	.....	95
9.	2-9	.....	98
10.	2-10	.....	101
11.	2-11	.....	104
12.	2-12	.....	107
13.	2-13	.....	110
14.	2-14	.....	113
15.	2-15	.....	116
16.	2-16	.....	119
17.	2-17	.....	122
18.	2-18	.....	126
19.	2-19	.....	130
20.	2-20	.....	133
		.....	136
1.	3-1	.....	136
2.	3-2	.....	140
3.	3-3	.....	145
4.	3-4	.....	149
5.	3-5	.....	154
6.	3-6	.....	159
7.	3-7	.....	164
8.	3-8	.....	169
9.	3-9	.....	174
10.	3-10	.....	179
11.	3-11	.....	184
12.	3-12	.....	186
13.	3-13	.....	188
14.	3-14	.....	190
15.	3-15	.....	192
16.	3-16	.....	194
17.	3-17	.....	196
18.	3-18	.....	198
19.	3-19	.....	200
20.	3-20	.....	202

		.....	204
		.....	204
1.	4-1	.....	204
2.	4-2	.....	207
3.	4-3	.....	210
4.	4-4	.....	213
5.	4-5	.....	216
6.	4-6	.....	219
7.	4-7	.....	222
8.	4-8	.....	225
9.	4-9	.....	228
10.	4-10	.....	231
		.....	234
1.	5-1	.....	234
2.	5-2	.....	236
3.	5-3	.....	238
4.	5-4	.....	240
5.	5-5	.....	242
6.	5-6	.....	244
7.	5-7	.....	246
8.	5-8	.....	248
9.	5-9	.....	250
10.	5-10	.....	252

1. 1-1

1

33

2100

10

2010

310

1995

1

3

5

1.2

1.2

2003

ABC

1



1-1

10		10	6S 0/3/5		
			0/3/5		
90		20		16-20	
				11-15	
				6-10	
				1-5	
				0	
		9		8-9	
				6-7	
				4-5	
				0-3	
		21	/	21	



			/	18	
			/	15	
			/	12	
			/	9	
			/	6	
			/	3	
				0	
		20	15		

			0/3/5		
		20	5	5	
			4		
	6				
	100				

—

2. 1-2

1

2002

0-16

1

:// . .

4

2

3

3

7

\*\*\*

4

10

200

500

120

5

		( )	10% (
	20%	800	80
	30%	112	11.2
	50%	88	8.8

A. ?

B.

2

7 8

0 2010

3

60

4

1-2

1-2					
10		10	6S 0/3/5		
			0/3/5		
90		20		16-20	
				11-15	
				6-10	
				1-5	
				0	
		9		8-9	
				6-7	
				4-5	
				0-3	
		21	/	21	

			/	18	
			/	15	
			/	12	
			/	9	
			/	6	
			/	3	
				0	
		20	15		

			0/3/5	
		20	55	
			64	
	100			

3. 1-3

1  
14  
4 DSR  
1  
14 :// 34091294. . /  
14 4  
2  
14 14  
3  
70  
14  
7  
\*\*\*  
4  
14 20  
500 14  
1500 14  
350  
5  
14

		( )	10% (
	20%	40000	4000
	30%	8000	800
	50%	2000	200

A. ?

B.

2



7 8

0 2010

3

60

4

1-3

1-3

6S

0/3/5

10

10

			/	18	
			/	15	
			/	12	
			/	9	
			/	6	
			/	3	
				0	
		20	15		

			0/3/5		
		20	5	5	
			4		
	6				
	100				

4. 1-4

1

N

F

1966

7

DSR

1

://

. .

4

2

3

3000

7

\*\*\*

4

20

500

1500

350

5

		( )	10% (
	20%	4000	400
	30%	800	80
	50%	200	20

A.

?

B.

2

7 8

0 2010

3

60

4

1-4

1-4

10		10	6S 0/3/5  0/3/5		
90		20		16-20	
				11-15	
				6-10	
				1-5	
				0	
		9		8-9	
				6-7	
				4-5	
				0-3	
		21	/	21	
			/	18	
			/	15	

			/	12	
			/	9	
			/	6	
			/	3	
				0	
		20	15		
			0/3/5		
		20	5	5	
			6	4	
		100			



5. 1-5

1

200

DSR

1

:// 71054329. . /

4

2

3

7

\*\*\*

4

30

5

2

20

15

5

		( )	10% (
	20%	400	40
	30%	80	8
	50%	20	2

A.

?

B.

2

7 8

0 2010

3

60

4

1-5

1-5					
10		10	6S 0/3/5		
			0/3/5		
90		20		16-20	
				11-15	
				6-10	
				1-5	
				0	
		9		8-9	
				6-7	
				4-5	
				0-3	
		21	/	21	

			/	18	
			/	15	
			/	12	
			/	9	
			/	6	
			/	3	
				0	
		20	15		

			0/3/5	
		20	55	
			64	
	100			

6. 1-6

1

DSR

1

:// 36830724. . /

4

2

3

7

\*\*\*

4

30

50

2

100

40

5

		( )	10% (
	20%	400	40
	30%	80	8
	50%	20	2

A.

?

B.

2

7 8

0 2010

3

60

4

1-6

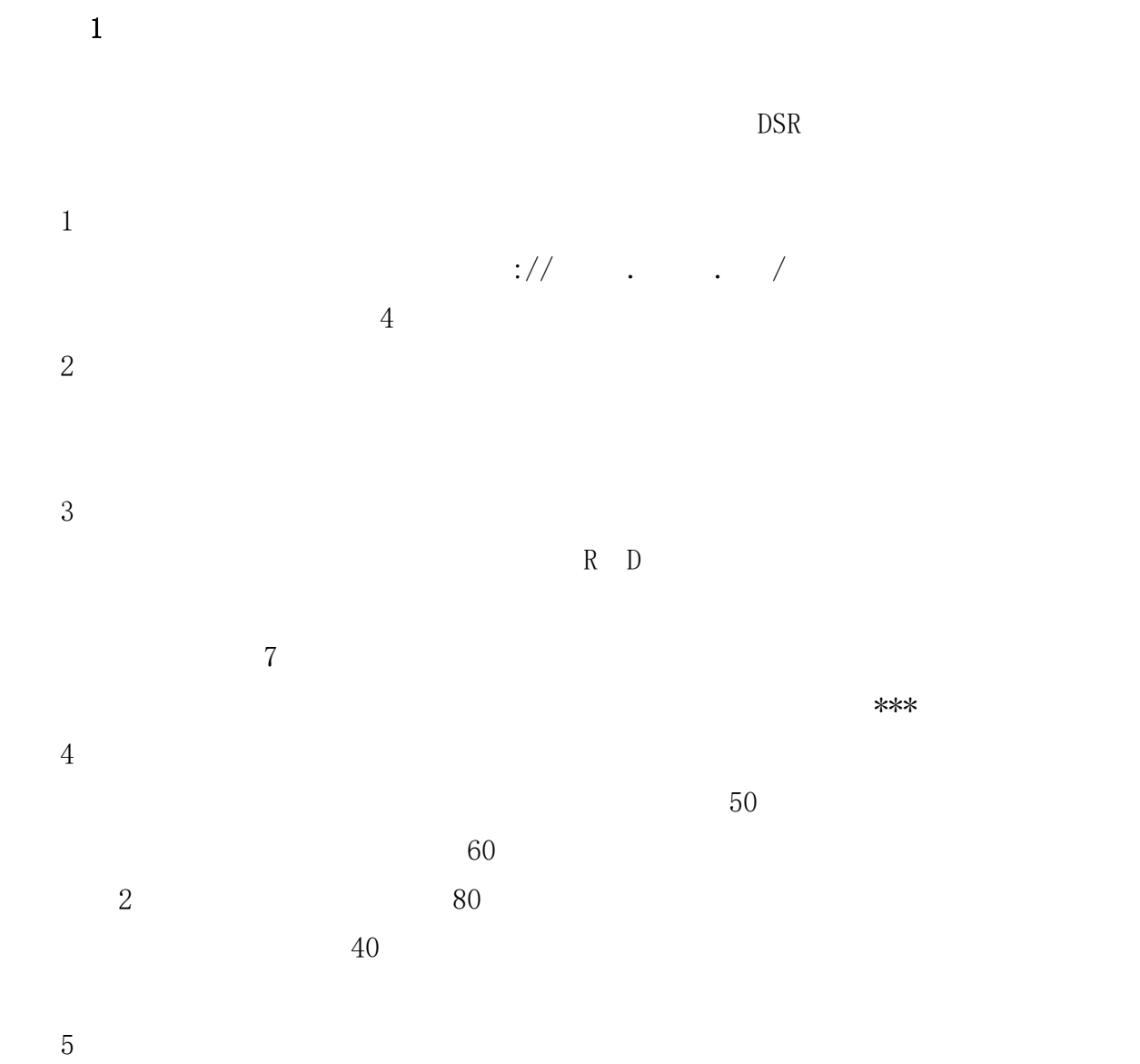
1-6					
			6S 0/3/5		
10		10	0/3/5		
90		20		16-20	
				11-15	
				6-10	
				1-5	
				0	
		9		8-9	
				6-7	
				4-5	
				0-3	
		21	/	21	



			/	18	
			/	15	
			/	12	
			/	9	
			/	6	
			/	3	
				0	
		20	15		

			0/3/5	
		20	55	
			64	
	100			

7. 1-7



		( )	10% ( )
	20%	400	40
	30%	80	8
	50%	20	2

- A. ?
- B.

2

7 8

0 2010

3

60

4

1-7

1-7

10		10	6S 0/3/5		
			0/3/5		
90		20		16-20	
				11-15	
				6-10	
				1-5	
				0	
		9		8-9	
				6-7	
				4-5	
				0-3	
		21	/	21	

			/	18	
			/	15	
			/	12	
			/	9	
			/	6	
			/	3	
				0	
		20	15		

			0/3/5	
		20	55	
			64	
	100			

8. 1-8

1

4 DSR

1

:// . . /

4

2

3

4 6+128G

7

\*\*\*

4

10

50

1

2000

1200

5

		( )	10% (
	20%	8000	800
	30%	1500	150
	50%	500	50

- A. ?
- B.



2

7 8

0 2010

3

60

4

1-8

1-8					
10		10	6S 0/3/5		
			0/3/5		
90		20		16-20	
				11-15	
				6-10	
				1-5	
				0	
		9		8-9	
				6-7	
				4-5	
				0-3	
		21	/	21	

			/	18	
			/	15	
			/	12	
			/	9	
			/	6	
			/	3	
				0	
		20	15		

			0/3/5	
		20	55	
			64	
	100			

9. 1-9

1

3 DSR

1

:// . . /

4

2

3

5-6

7

\*\*\*

4

20

40

3

50

35

5

		( )	10% (
	20%	400	40
	30%	80	8
	50%	20	2

A.

B.



1-9					
10		10	6S 0/3/5		
			0/3/5		
90		20		16-20	
				11-15	
				6-10	
				1-5	
				0	
		9		8-9	
				6-7	
				4-5	
				0-3	
		21	/	21	

			/	18	
			/	15	
			/	12	
			/	9	
			/	6	
			/	3	
				0	
		20	15		



			0/3/5	
		20	55	
			64	
	100			

10. 1-10

1

5

DSR

1

:// . . /

4

2

3

H -704B

7

\*\*\*

4

5

50

1

200

50

5

		( )	10% (
	20%	4000	400
	30%	800	80
	50%	200	20

A.

?

2

7 8

0 2010

3

60

4

1-10

1-10					
10		10	6S 0/3/5		
			0/3/5		
90		20		16-20	
				11-15	
				6-10	
				1-5	
				0	
		9		8-9	
				6-7	
				4-5	
				0-3	
		21	/	21	

			/	18	
			/	15	
			/	12	
			/	9	
			/	6	
			/	3	
				0	
		20	15		

			0/3/5	
		20	55	
			64	
	100			

11. 1-11

1

1	
1	
2	
2	
3	
3	
4	
4	
5	
5	




1-11			
10	10	6S	0/3/5
			0/3/5
90		25	5
			16-20
			11-15
			6-10
		35	0-5
			29-35
			22-28
			15-21
		30	8-14
			0-7
			0/3/5
			18-25
		30	10-17
			0-9
		100	

12. 1-12

1

2000 4 20  
518  
2011

GSM TD-SCDMA

500 87

50

30 15  
15

1

1 40

1


2

:

7 21 30 15

11 12

11 12

11 12

2

2

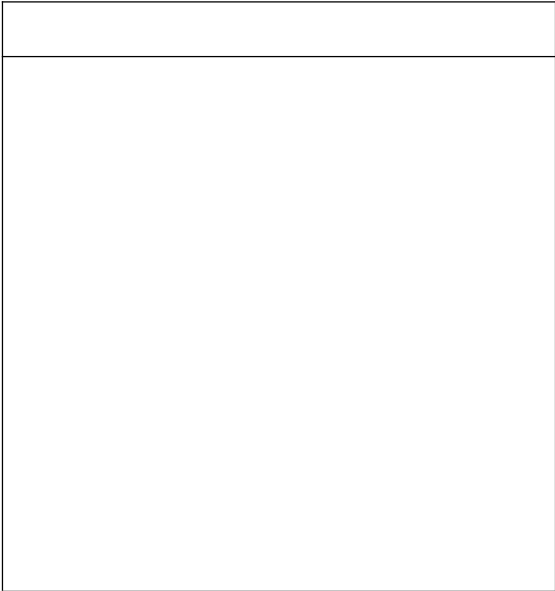
1	
1	
2	

2	
3	
3	
4	
4	
5	
5	

3

3200

3



2

7802010

3

60

4

1-12

1-12

6S

0/3/5

10

10

13. 1-13

1

:// . . /

200

800

6 11

6 6

20

6 10

1145

6 8

6

8

6 10

6 8

1145

1

1

40

1


2

:

6 8

6 10

2

2



1-13			
10	10	6S	0/3/5
			0/3/5
90	25	5	
		16-20	
		11-15	
		6-10	
		0-5	
	35	29-35	
		22-28	
		15-21	
		8-14	
		0-7	
	30	0/3/5	
		18-25	
		10-17	
		0-9	
		100	

14. 1-14

1

4

5 2

5 6

1

1

40

1


2

:

2

2

1	
1	
2	
2	
3	
3	
4	
4	



5	
5	

3

3

200

3


2

7

8

0

2010

3

60

4

1-14

1-14			
10	10	6S	0/3/5
			0/3/5
90	25	5	
		16-20	
		11-15	
		6-10	
		0-5	
	35	29-35	
		22-28	
		15-21	
		8-14	
		0-7	
30	0/3/5		
	18-25		
	10-17		
	0-9		
		100	

15. 1-15

1  
2015 3 17 198  
32G U 3 19  
U  
U 1G 32G

1

1 40  
1


2

U  
32G U 1G

2  
2

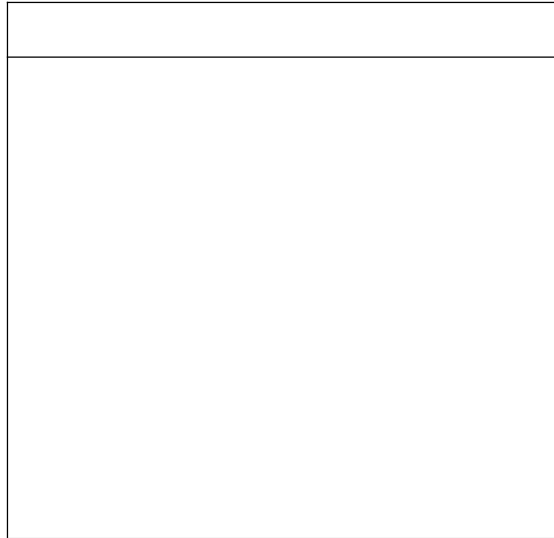
1	
1	
2	
2	
3	
3	
4	
4	
5	
5	

3

3

200

3



2

7

8

0

2010

3

60

4

1-15

1-15

6S

0/3/5 5

10

10

16. 1-16

1

( :// . . . /)

5

2018 2 6

200

2

1

1 40

1


2

2

2

2

1	
1	
2	
2	
3	
3	
4	



1-16							
10		10	6S0/3/50/3/5				
90		25	516-2011-156-100-5				
				35	29-3522-2815-218-140-70/3/5		
						30	18-2510-170-9
			100				



17. 1-17

1  
B2C +  
199 / 4  
4 199

1

1 40  
1


2

2  
2

1	
1	
2	
2	
3	
3	
4	
4	

5	
5	

3

3 200  
3


2

7 8 0 2010

3

60

4

1-17

1-17				
10	10	6S	0/3/5	
			0/3/5	
90	25	5		
		16-20		
		11-15		
		6-10		
			0-5	
	35	29-35		
		22-28		
		15-21		
		8-14		
		0-7		
	30	0/3/5		
		18-25		
		10-17		
		0-9		
		100		

18. 1-18

1

1999

17

25000

2003 12

9000

2015 10 26

2015 12 15

2015 12 25

28445467318

(12

25 )

( )

1

1

40

1


2

12 25

2

3

200


3

2010

1-18

1-18					
10		10	6S0/3/50/3/5		
90		25	516-2011-156-100-5		
			35	29-3522-2815-218-140-70/3/5	
				30	18-2510-170-9
					100

19. 1-19

1

100%

150

1000

1

1

40

1


2

150

1

1000

2

2

1	
---	--





1-19			
10	10	6S	0/3/5
			0/3/5
90	25	5	
		16-20	
		11-15	
		6-10	
		0-5	
	35	29-35	
		22-28	
		15-21	
		8-14	
		0-7	
30	0/3/5		
	18-25		
	10-17		
	0-9		
		100	

20. 1-20

1

:// . . / 2014 4

0 12

APP 2019 3 2

150

1

1 40


1

2

2016 3 2

150

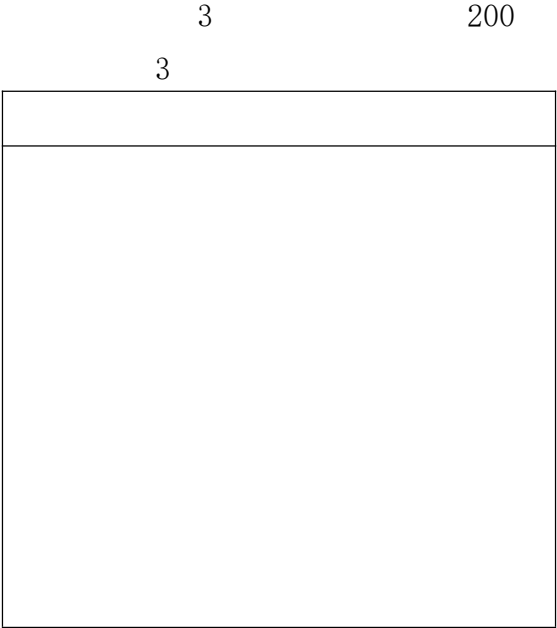
2

2

1	
---	--

1	
2	
2	
3	
3	
4	
4	
5	
5	

3



1-20							
10		10	6S0/3/50/3/5				
90		25	516-2011-156-100-5				
				35	29-3522-2815-218-140-70/3/5		
						30	18-2510-170-9
			100				

1. 2-1

1  
B N

58 /

950 400

. . .

1.

2. 3.

1

. . .

100KB

2

	7	8	0	20010
P	CS6.0			
3				
	60			
4				
	( 2-1)			



2. 2-2

1

1860 /

3

150

30

50

6

1

950

350

.

.

1.

2.

3.

1

.

.

.

100KB

2

7 8

0

2010

P

CS6.0

3

60

4

( 2-2)



(2-2)

(10 )	10	5	6S PSD
		5	
	5	3	2
	10	5	5
	20	10	5
		5	
	25	5	
		5	
		2	5
			5
(90 )		3	
	10	5	
		5	
	10	5	3
		2	
	5	1	2
		2	
	5	2	2
	100		

3. 2-3

1

950 400

1

.

.

.

100KB

2

7 8

0 2010

P

CS6.0

3

60

4

( 2-3)

(2-3)

4. 2-4

1

+

950

350

1.

2.

1

.

.

.

100KB

2

7 8

0 2010

P

CS6.0

3

60

4

( 2-4)

(2-4)

(10 )	10	5	6S PSD
		5	
	5	3	2
	10	5	5
	20	10	5
		5	
	25	5	
		5	
		2	5
			5
(90 )		3	
	10	5	
		5	
	10	5	3
		2	
	5	1	2
		2	
	5	2	2
	100		

5. 2-5

1

790

72 /

/

3

3

. PSD

. JPG

2

7 8

0 2010

P

CS6.0

3

60

4

( 2-5)

(2-5)

6S

5

(10 )

10

PSD

5

15

3

4

3 /

12

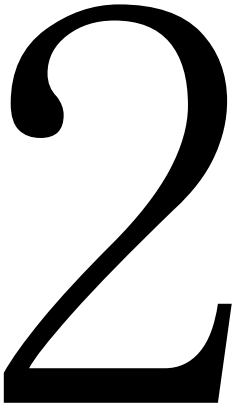
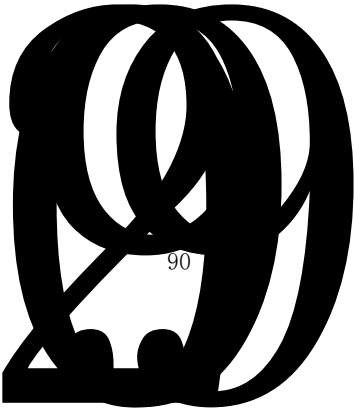
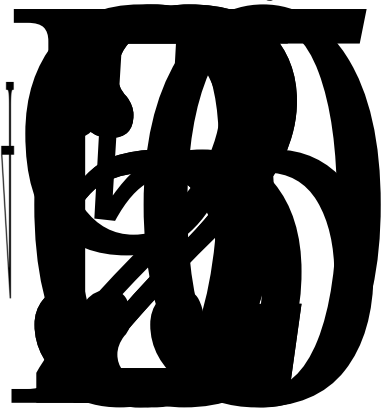
(90  
)

12

3

3

90







(2-6)

		6S	
(10 )	10	5	
		PSD	5
	15	3	
		4	3 /
	12		3 /
	15	1 0-5 2 2 6-10 3 3 11-15	3  3 3
	10	3	
		5	2
(90 )	15		5 5 5
		0 /2 /3 /4 /5	
	8		4
		4	
	5		0 /2 /3 /4 /5
	10	2	6
		2	
	100		



2-7

(10 )	10	5 6S	
		PSD 5	
	15	3 4 3 /	
	12	3 /	
	15	1 0-5 2 2 6-10 3 3 3 11-15	
	10	3 5 2	
(90 )	15	5 5 5 0 /2 /3 /4 /5	
	8	4 4	
	5	0 /2 /3 /4 /5	
	10	2 6	
		2	
	100		

8. 2-8

1

L B

1) L

80 80 80 /

L . PSD

. JPG

JPG

150K

2) B

1920 500 100 /

1. 2 .

B

B

B

L

. PSD

. JPG

JPG

150K

3)

2

800 800 72 /

\* \*

1. 2.

3M

2

7 8 0 2010

P CS6.0

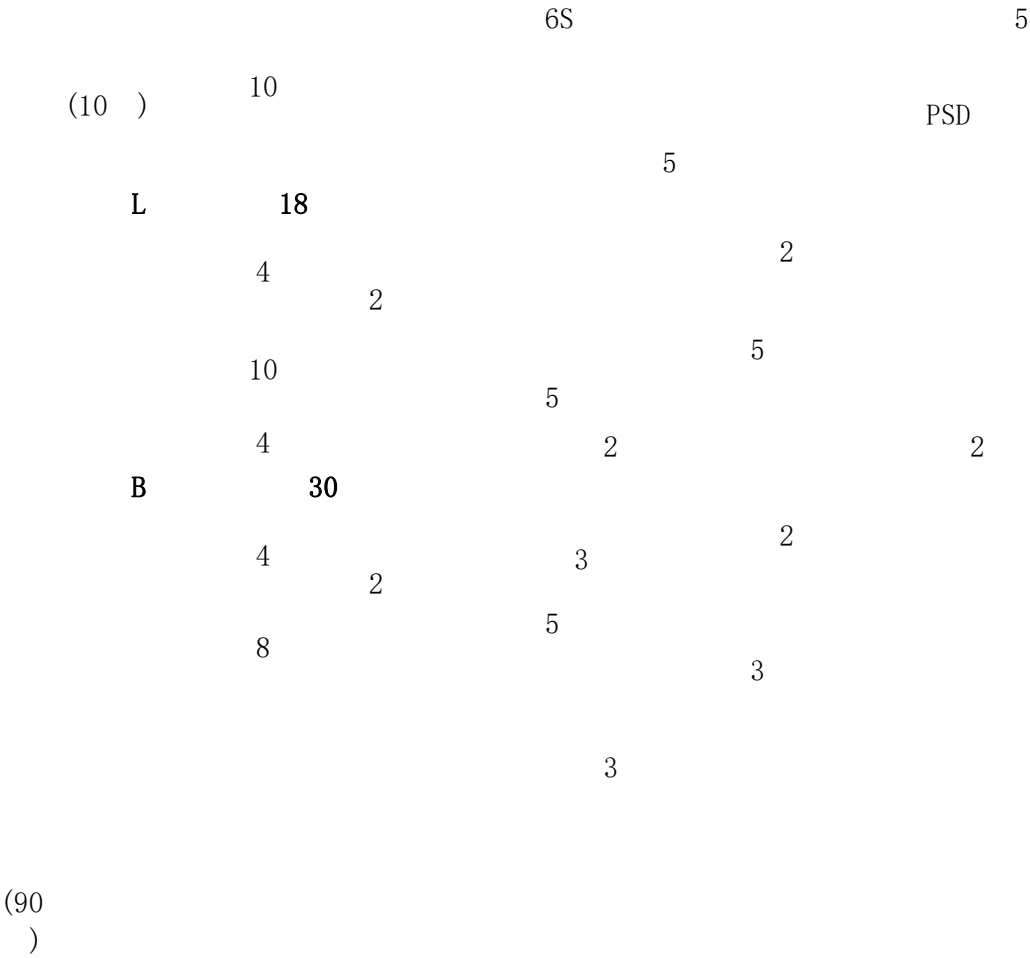
3

60

4

( 2-8)

(2-8)



9. 2-9

1

SK-II

L B  
1) L

80 80 80 /

. JPG . PSD  
150K JPG  
2) B

1920 500 100 /

B

B  
B

L

. JPG . PSD  
150K JPG  
3)

800 2 800 72 /

\* \*

1. JPG 2. JPG

3M

2

7 8

0 2010

P

CS6.0

3

60

4

( 2-9)



(2-9)

(10 )	10	6S5 PSD 5	
(90 )	L 18		
	4	22	
	10	55	
	4	22	
	B 30		
	4	22	
	8	53	
	14	B L 2 3 3 3 3	
	4	22	
	42		
	4	22	
	14	23 2	
	16	3 5 8 2 16	
	8	22 4 2 8	
	100		

10. 2-10

1

L B

1) L

80 80 80 /

L . PSD

. JPG JPG

150K

2) B

950 120 100 /

B

B

B L

. PSD

. JPG JPG

150K

3) 2

800 800 72 /

\* \*

1. JPG 2. JPG

3M

2

		7	8	0	2007	P
	CS6.0					
3						
		60				
4						
				(	2-10)	

(2-10)

6S

5

(10 ) 10

PSD

11. 2-11

1

778 76

B

P 1 P 2 1

K

石头记  
www. istone. com

English

首页 产品展示 关于我们 售后服务 联系我们

T  
W  
The Diamond Engagement Ring  
H

It's the minute you see it, you'll know.  
Whenever you find a piece of it,  
at least 2,000 times a day,  
you will remember the time  
before you said the forever we.

It's with the ring you'll wear it, every day of your life.  
Chances are, you'll find it in the design you really want.  
For a full engagement ring, or a pair of earrings, or any other jewelry,  
http://www.istone.com/istone.com  
A diamond is forever.  
De Beers

来自韩国

银色小花设计，高贵而不张扬，非常适合办公室MM哦！优质合金镀  
K金，可保长久不退色



产品展示



copyright2011，版权所有 company. com

1  
P 1 2

MM

104

K

.

U .

.

.

CSS

.

CSS

12

#CC0000

2

7 8

0

2010

P

CS6.0

D

2-11

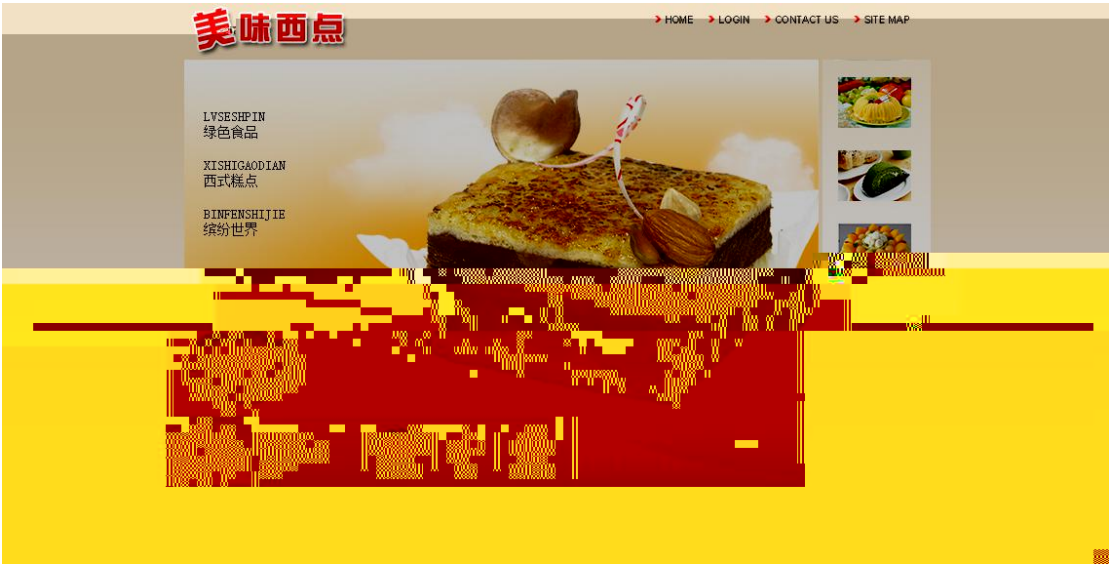
(10 )		10	5 6S	
			5	
(90 )	B	12	2 2 2	
			2 4 2	
		10	2 5	
		10	3 4	
			3	
		8	K 2	
			2 2	
		10	7 3	
		15	5 5	
			5	
(90 )		10	4	
	CSS	15	5 5	
			5 5	
		100		

\_\_\_\_\_

12. 2-12

1

1



1

1. 1. 1. 1.

1

2. 3. 4.

2. 3.

1

5. 6. 4.

5. 6. 4.

4.

. 1. 3. 4.

4.

LVSESHPIN

ISHIGAODIAN

BINFENSHIJIE



.  
 .  
 :// .  
 .  
 CSS  
 B  
 16 1.5 :  
 :  
 K  
 2  
 7 8 0 2010  
 P CS6.0 D CS6  
 3  
 60  
 4  
 ( 2-12)

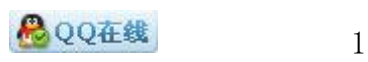
2-12

(10 )	10	5 6S	
		5	
B	10	L 5 5	
	8	1 5 3	
	15	3 3 9 3 3	
	10	2 4 6 0	
	10	4 0-6	
(90 )	10	2 4	
	17	2 5 : 5 : 5	
	10	K 2 3 2 3	
	100		

\_\_\_\_\_



3                    150                    120                    1                    10



K

2

P                    7      8                    0      2010  
                  CS6.0                    D                    CS6


3

60

4

(      2-13)

2-13

(10 )	10	5 6S	
		5	
(90 )		2 2	
	10	2 2	
		2	
	15	0-9 9-12	
		12-15	
	16	2 2	
	C 20	2 3 3	
	5		
	14	5 3 3	
		3	
	10	K 2	
		3	
		2 3	
	100		

14. 2-14

1

H S D

LOGO

H S D

. . .

: .

1. 2. 3.

4. . . 12

173 404

1. 1. 1.

1. 1. 1.

1.

1 4

2. 3.

.

#FF4615

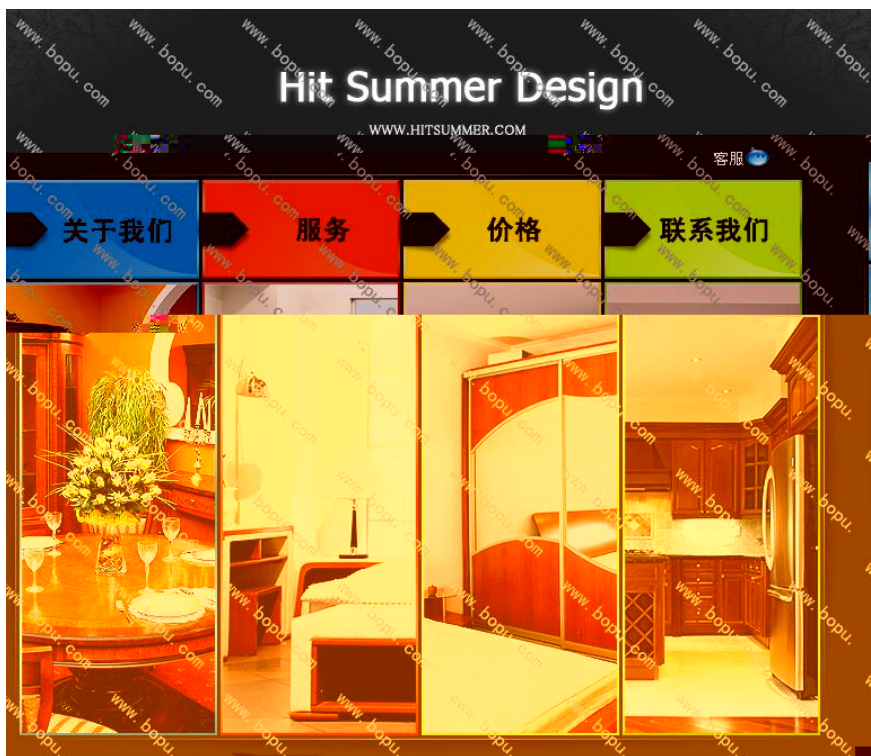
#0887DE

#FDE52A

#B9EE13

.





1

K

:// . . /

:// . . . / :// . .

:// . . /

2

7 8 0 2010

P CS6.0 D CS6

3

60

4

( 2-14)

2-14

(10 )	10	5 6S	
		5	
(90 )	L	6 LOGO 0-2 /3-4 /5-6 H S D 0	
		12 1	
		18 2 2 2	
		20 4 0-1 /2-3 /4	
		14 2 2 0-10	
		4 2 2	
		8 K 2 2 2	
		8 2	
	100		

\_\_\_\_\_



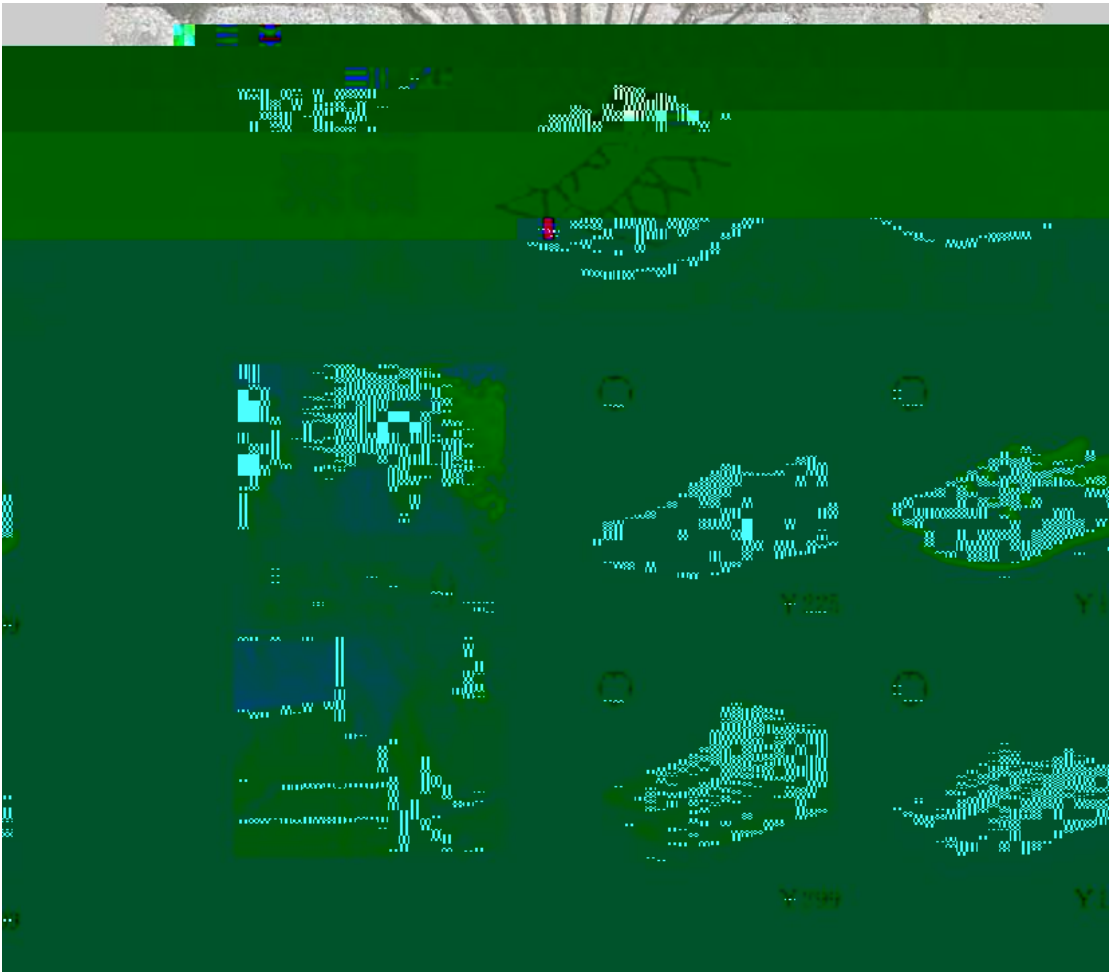
15. 2-15

1

1

1. 2. . .

700 230



1

1

1.

4.

1

2

#FF0000

#FFFFFF

3

4

1

.

#CCCCCC

K

1.

:// . . /

2

7

8

0

2010

P

CS6.0

D

CS6

3

60

4

( 2-15)

2-15

(10 )		10	5	6S
				5
B		16	2	0 /1-3 /4-5 0/1-3/4-5
			2	
			0-2 /3-4	
(90 )		20	1	4 2 0 /1 1 2
		29	0-15 2 2 12	
		6	2	2 2
		10	K	2 3 2 3
		9	5	2
		100		

16. 2-16  
1

800 200 B 1.  
.  
.  
. G -TI.  
.  
1. 2.  
1.  
. B 1  
1  
3 J 4 J  
1. 2. 3. 4.  
198 70  
< = " "> < = " "> < / >  
1  
K



1

2

7

8

0

2010

P

CS6.0

D

CS6

3

60

4

( 2-16)

2-16

(10 )	10	6S 0 /3 /5  0 /3 /5	
(9 0 )		2 LOGO 2 3 3 B 2	
	10	2 4 2 2	
	20	5 10 1	
	7	3 4	
	20	2 2 5 0-5	
	8	3 5	
	10	K 2 3 2 3	
	100		

\_\_\_\_\_

17. 2-17

1

SKINFOOD

01.

LOGO . SKINFOOD

A 24

-45 10

01 .

04.

04 .

-2. 400 350

. 01 . 04

. 01. 04.

-2. 1



1

3.

. 3.

1000 540 .

2

1.

2.

490

450

2.

1.

2.

2

DIV

1.

2.

2

1.



.

.

.

1.

2.

1

50

#DBCAAC

#623F23





2  
 9 K  
 2  
 7 8 0 2010  
 P CS6.0 D CS6  
 3  
 60  
 4  
 ( 2-17)

(10 )	10	5 6S 5	
(90 )	LOGO	13 2 3 2 2	
		9 2 3 2	
		5 2	
		5 3 2	
		12 2 LOGO 5 3 2	
		10 3 2 3 1	
		20 5 2 2 6	
		6 K 1 2 1 2	
		10 5 5	
		100	

\_\_\_\_\_

18. 2-18  
1

01. 18

01 . 4

-1. -1.  
. /

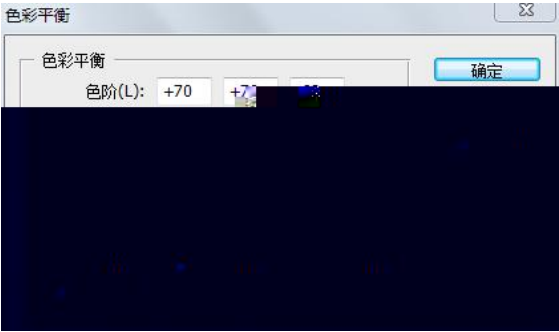
01 .

4

24. 27. 29.  
24.

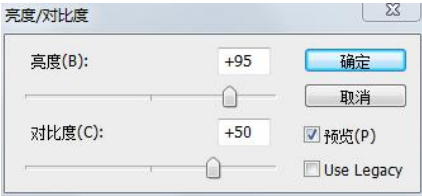
31.

1



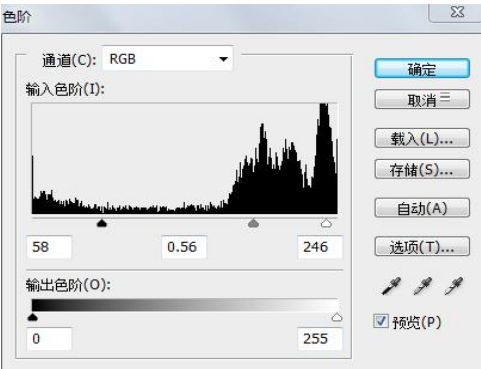
1

27. 2



2

29. 3



3

29. . 24. 27.  
31. 01. .

B 4

12

2 16 2  
4



4

K

2

	7	8	0	2010
P	CS6.0		D	CS6
3				
	60			
4				
				( 2-18)

2-18

		6S	
(10 )	10	5	
		5	
(90 )	L	12	2 3 2 1
	B	16	4 4 2 3 3
		14	2 2 2
		4	4
		8	2 2 2
		16	3 3 10
		12	2 10
		8	K 2 2 2
		100	

\_\_\_\_\_

19. 2-19  
1

. TTF .

. .  
1

700\*450 .

.  
350 110



1

2 4

170 30 1. 2. 3. 4.

D

· PRODUCT

2

1

CSS

.

CSS

14

1.5

1

14

24

2

.

.

.

.

#009999

K

2

7 8

0 2010

P

CS6.0

D

CS6



2-19

	(10 )	10	5	6S
				5
(90 )	B	13	3	2
			2	2
		4	2	2
		12	3	
		6	1	
		10	5	5
	CSS	17	6	5
		16	2	2
		4	2	2
		8	K	2
			2	2
		100		

\_\_\_\_\_

20. 2-20

1

. .

1- 6 400\*300

.

#000000

#FF0000

B 1 B 2

6 2 3

200\*150 1

1 #1E6E87 150 20

#1E6E87 50 20

K



1

2

P 7 8 0 2010  
CS6.0 D CS6

3

60

4

( 2-20)

2-20

(10 )	10	5 6S	
		5	
	10	3 4	
		3	
	18	1 2	
	8	2 2	
		2 2	
	22	5 5 2 3 5	
		5 2	
(90 )	18	3 9	
		3 3	
	6	3	
		3	
	8	K 2	
		2 2	
		2 2	
	100		

\_\_\_\_\_

1. 3-1

1  
1

200

2

4

T

T



3

采购量 1-1000件 165元/件	采购量 1-1000件 195元/件	采购量 1001-2000件 190元/件	采购量 2001-3000件 185元/件
采购量 3001-4000件 180元/件	采购量 4001-5000件 175元/件	采购量 5000件以上 170元/件	
T恤			
采购量 1-1000件 160元/件	采购量 1001-2000件 155元/件	采购量 2001-3000件 150元/件	采购量 3001-4000件 145元/件
采购量 4001-5000件 140元/件	采购量 5000件以上 135元/件		
牛仔裤			
采购量 1-1000件 270元/件	采购量 1001-2000件 265元/件	采购量 2001-3000件 260元/件	采购量 3001-4000件 255元/件
采购量 4001-5000件 250元/件	采购量 5000件以上 245元/件		
卫衣			
采购量 1-1000件 180元/件	采购量 1001-2000件 175元/件	采购量 2001-3000件 170元/件	采购量 3001-4000件 165元/件
采购量 4001-5000件 160元/件	采购量 5000件以上 155元/件		

5

APP

6

200

1

2

	172. 16. 0. 131/	
	48	
	3 1	

3

90

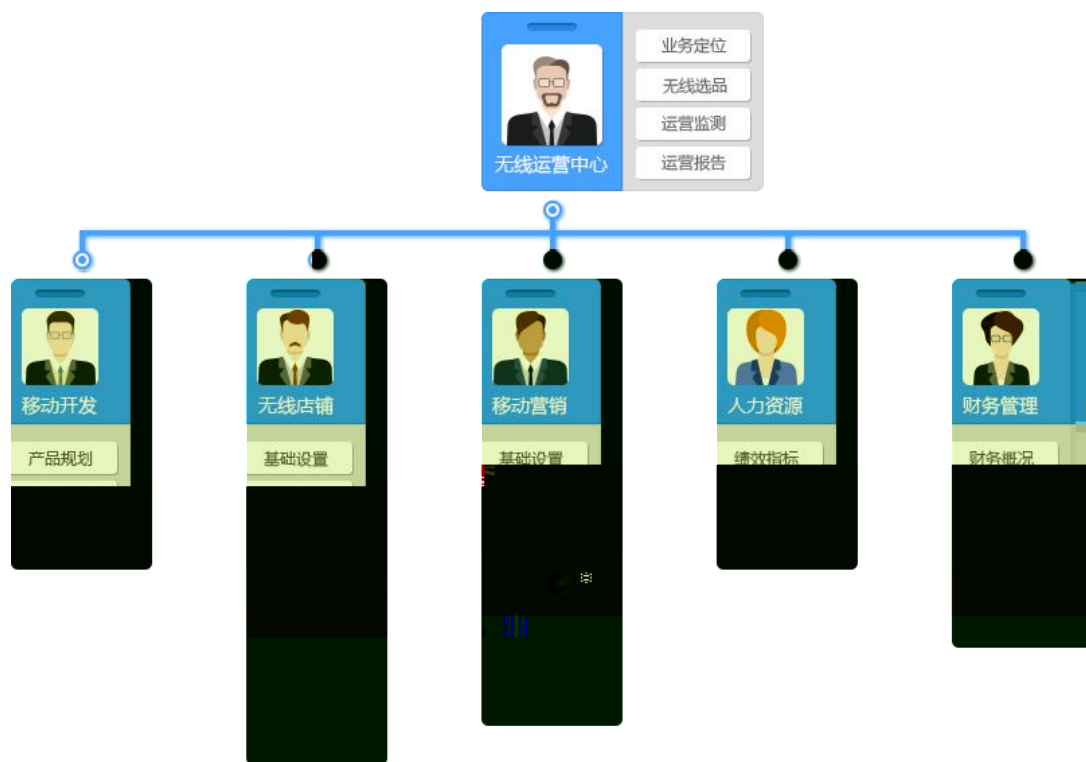
10	10	6S 3 /3 /4	
90		10	
		10	
		10	
		10	
		10	
		10	
		10	
		10	
		10	
		10	
APP	15	5 10	
	15	5 10	
	10	5 5	
	10	5 3 2	
	10	5 5	
	100		



2. 3-2

1  
1

200



2

4

T

T







10		10	6S 3 /3 /4	
90		10		
			A 2 2 2 4	
		10	5	
			5	
		10	5	
			2	
			3	
	APP	15	5 10	
		15	5 10	
		10	5 5	
	10	5 3 2		
	10	5 5		
		100		

3. 3-3

1  
1

200

2

4



3

[illegible]

4

5

APP

6

200

1

2

	172. 16. 0. 131/	
	48	
	3 1	

3  
90  
4

3-3



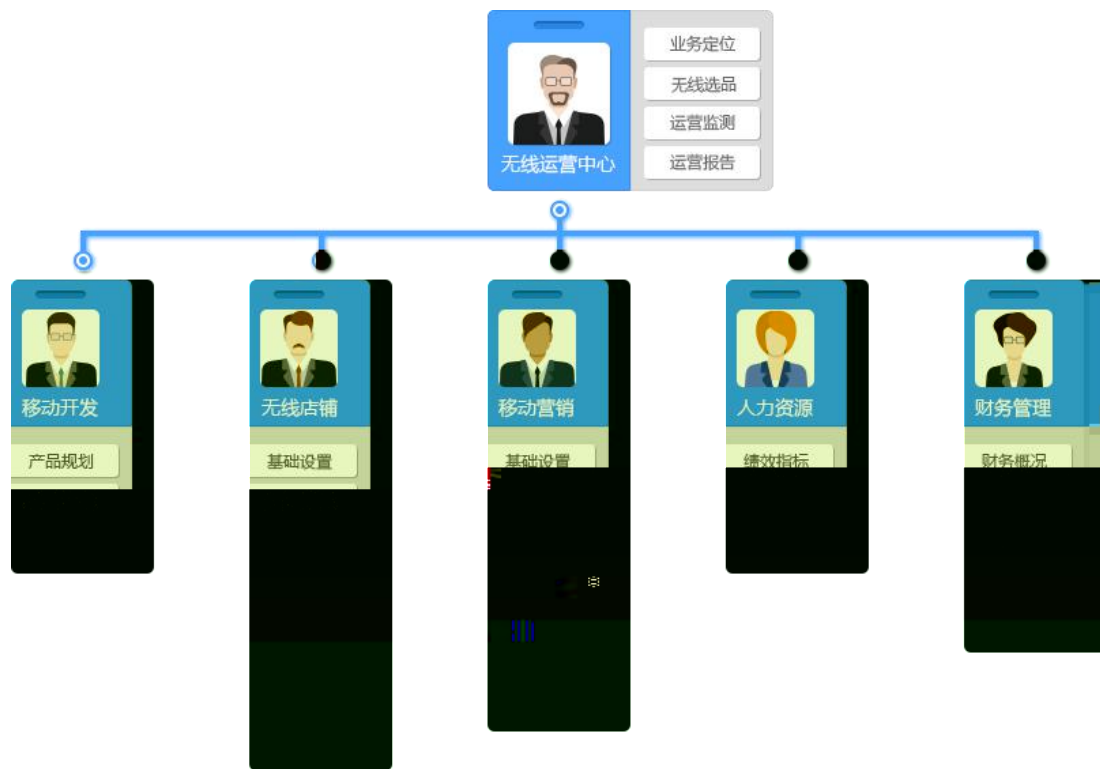
### 3-3

10	10	6S 3 /3 /4	
90			
	10	A 2 2 2 4	
	10	5	
		5	
	10	5	
		2	
		3	
	15	5 10	
	15	5 10	
	10	5 5	
	10	5 3 2	
	10	5 5	
	100		

4. 3-4

1  
1

200



2

4

### 选品参考数据：市场交易热度

 圈越大表示该品类商品越热销







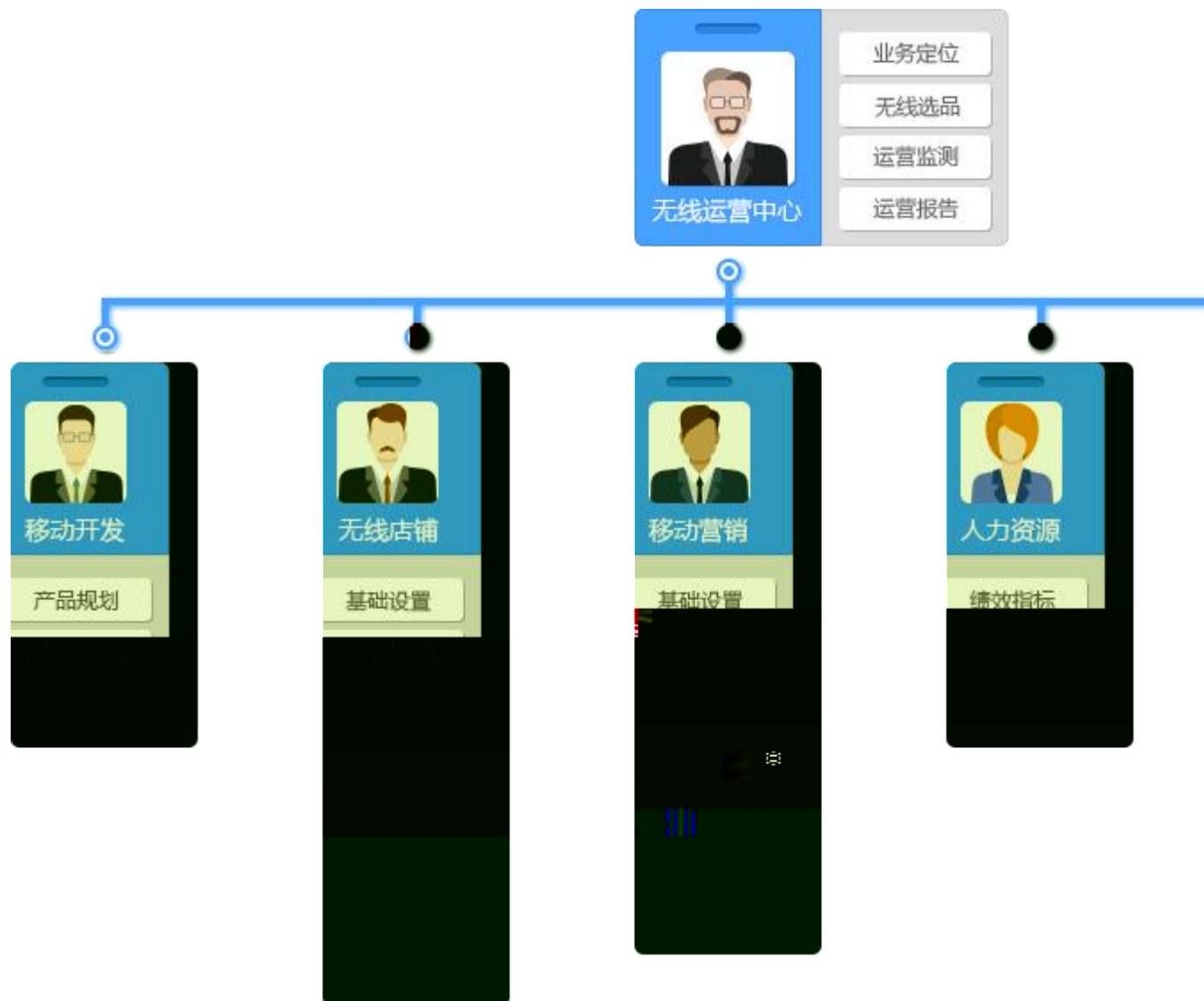
### 3-4

10	10	6S 3 /3 /4	
90		10	
		10	
		10	
		10	
		10	
		10	
		10	
		10	
		10	
		10	
		10	
APP	15	5 10	
	15	5 10	
	10	5 5	
	10	5 3 2	
	10	5 5	
	100		

5. 3-5

1  
1

200



2





4



5

APP

6

200

1

2

	172. 16. 0. 131/	
	48	
	3 1	

3

90

4

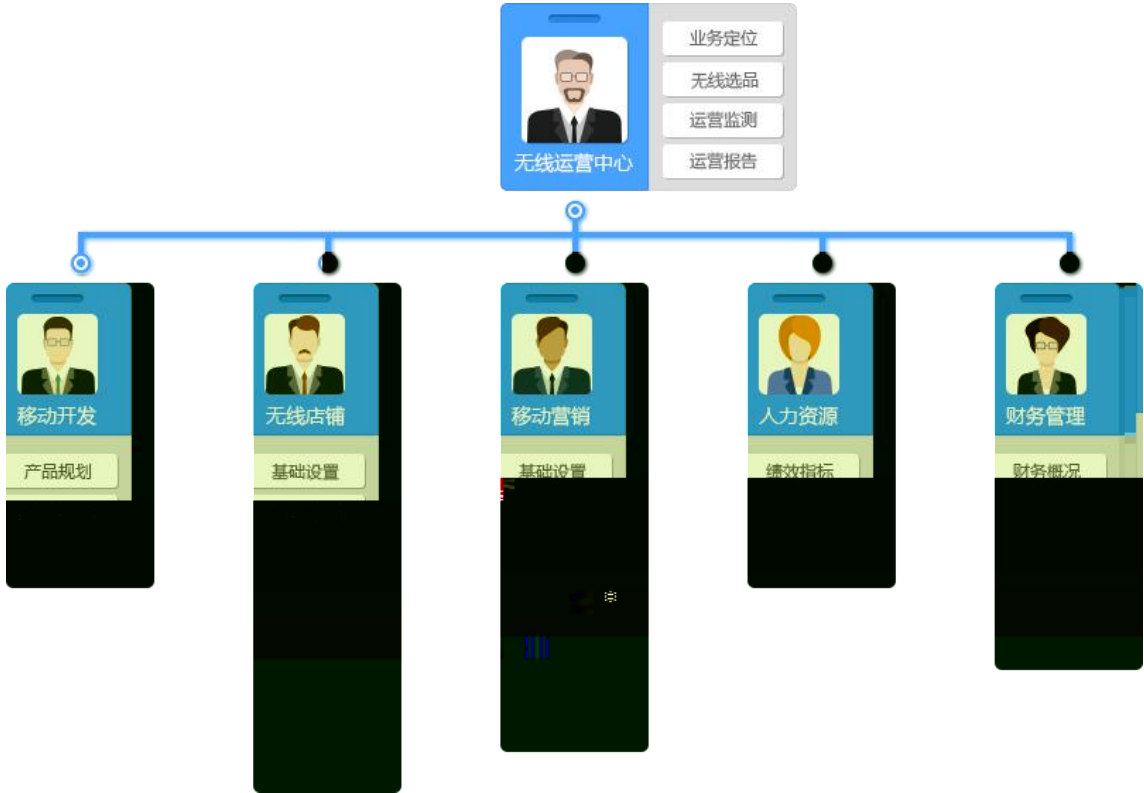
3-5

10	10	6S 3 /3 /4	
90		10	
		10	
		10	
		10	
		10	
		10	
		10	
		10	
		10	
APP	15	5 10	
	15	5 10	
	10	5 5	
	10	5 3 2	
	10	5 5	
	100		

6. 3-6

1  
1

200

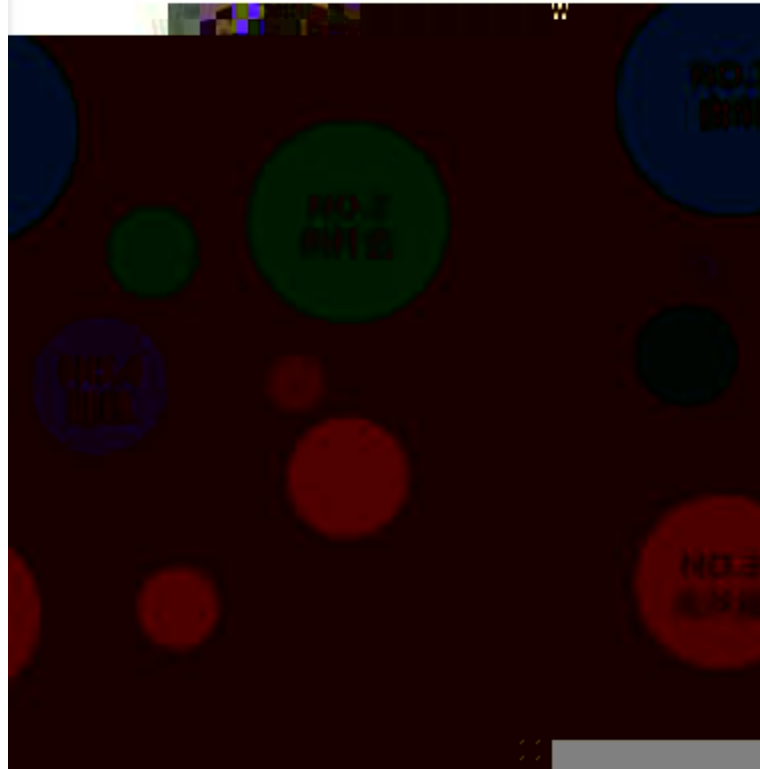


2

4

### 选品参考数据：市场交易热度

 圈越大表示该品类商品越热销





2

	172. 16. 0. 131/	
	48	
	3 1	

3

90

4

3-6

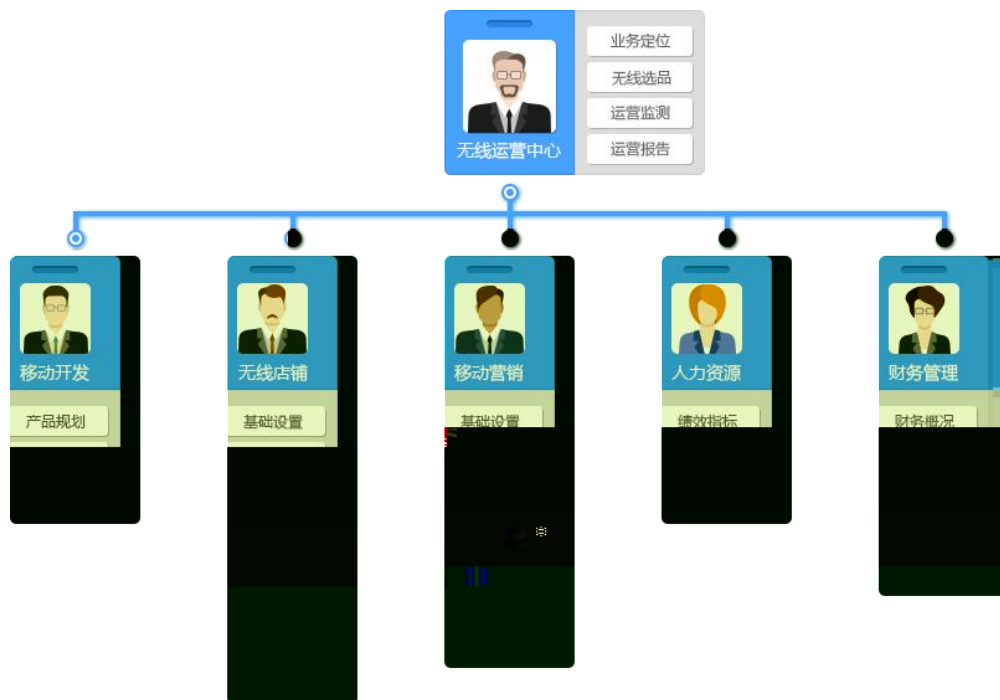
3-6



7. 3-7

1  
1

200



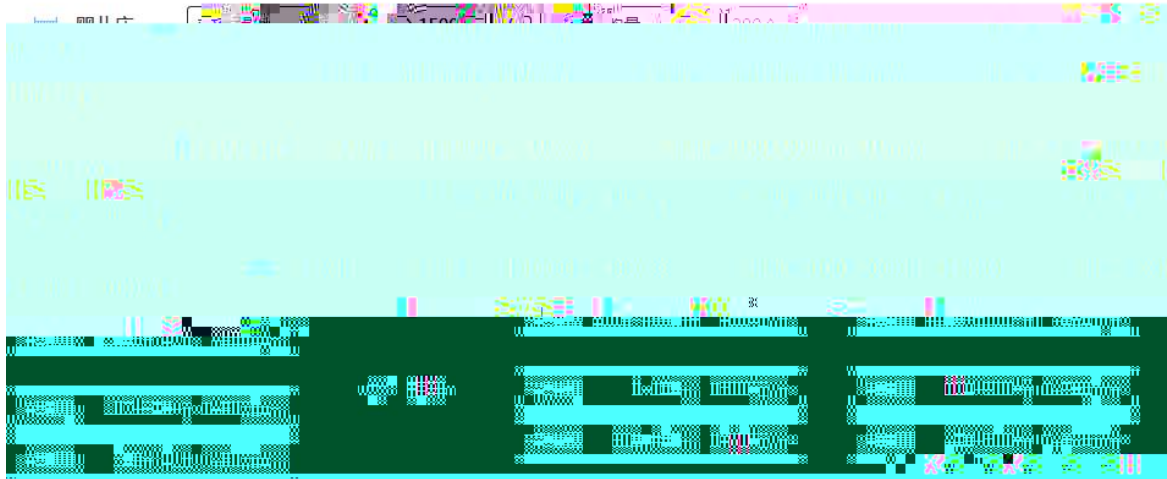
2

4

选品参考数据：市场交易热度

 圈越大表示该品类商品越热销





4

-----

-----

5

APP

6

200

1

2

	172. 16. 0. 131/	
	48	
	3 1	

3

90

4

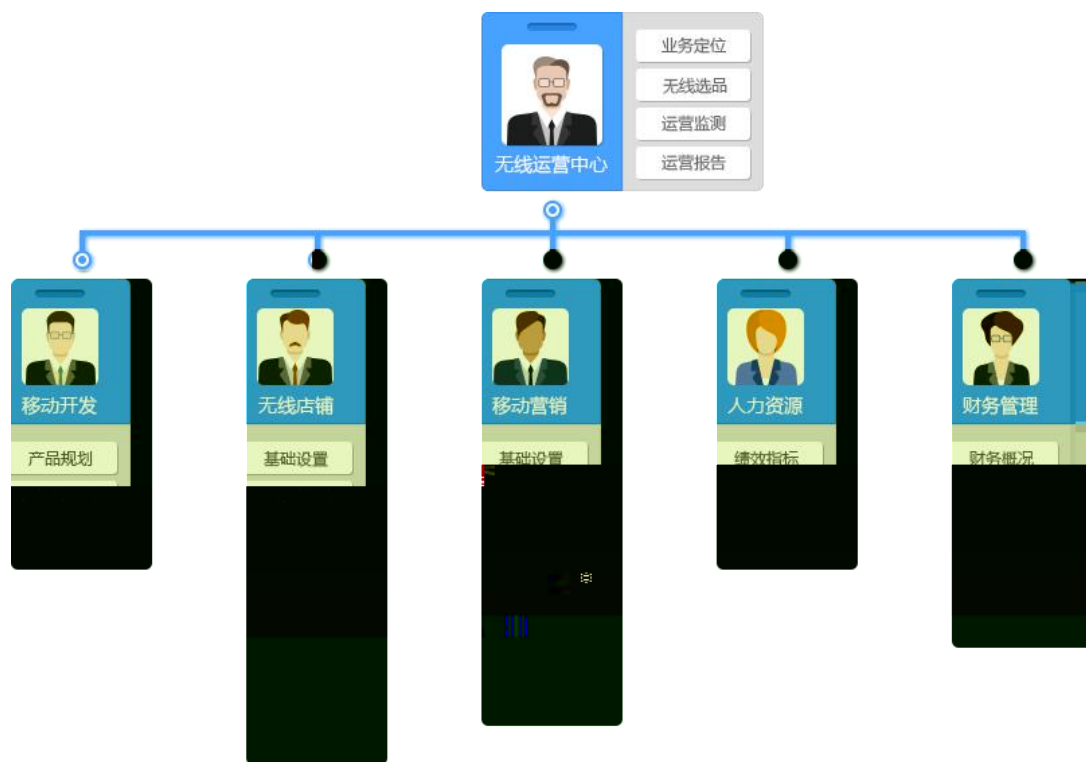
3-7

10	10	6S 3 /3 /4	
90		10	
		10	
		10	
		10	
		10	
	APP	15	
		15	
		10	
		10	
		10	
		100	

8. 3-8

1  
1

200

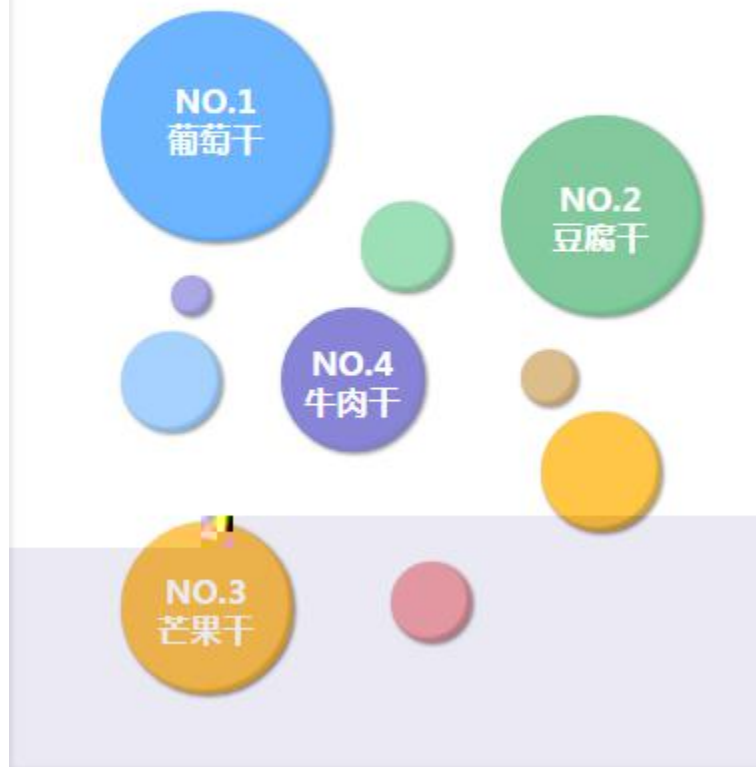


2

4

### 选品参考数据：市场交易热度

 圈越大表示该品类商品越热销



4



5

APP

6

200

1



2

	172. 16. 0. 131/	
	48	
	3 1	

3

90

4

3-8

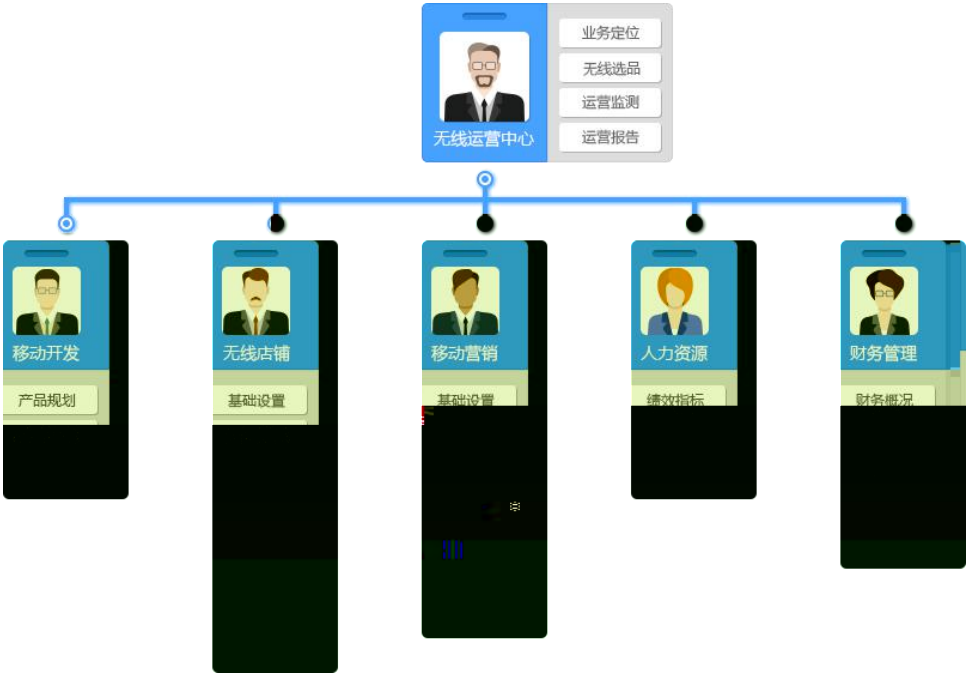
3-8

10	10	6S 3 /3 /4	
90		10	
		10	
		10	
		10	
		10	
		10	
		10	
		10	
		10	
		10	
		100	

9. 3-9

1  
1

200



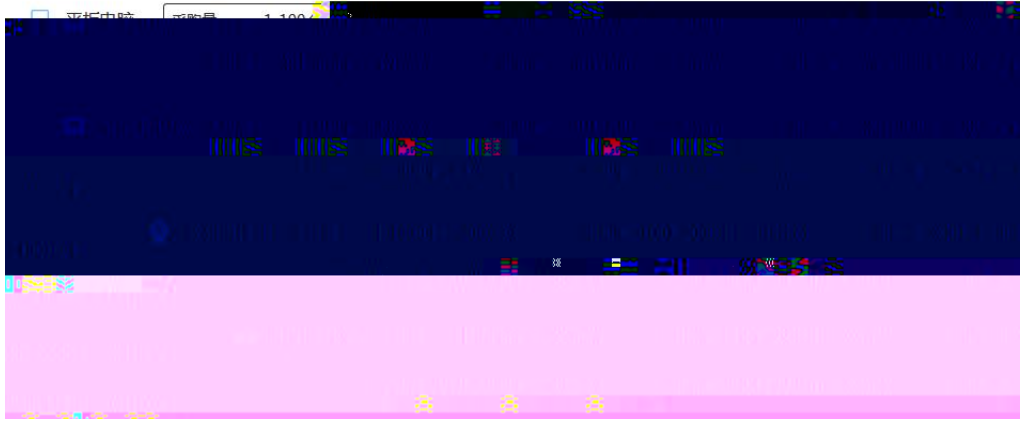
2

4

### 选品参考数据：市场交易热度

 圈越大表示该品类商品越热销





4

10/10/2017 10:10:10

10/10/2017 10:10:10

5

APP

6

200

1

2

	172. 16. 0. 131/	
	48	
	3 1	

3

90

4

3-9

3-9

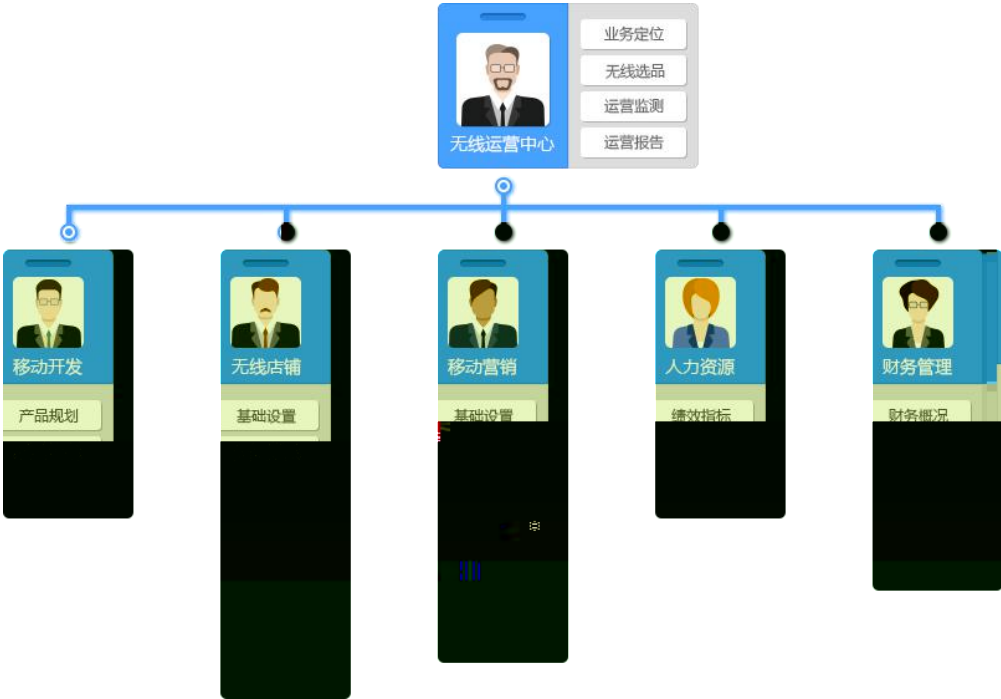
10		10	6S 3   /3   /4			
90		10				
			2 A   2 2 4			
		10	5			
			5			
		10	5			
			2			
			3			
	APP	15	5 10			
		15	5 10			
		10	5 5			
	10	5 3 2				
	10	5 5				
		100				

10. 3-10

1

1)

200



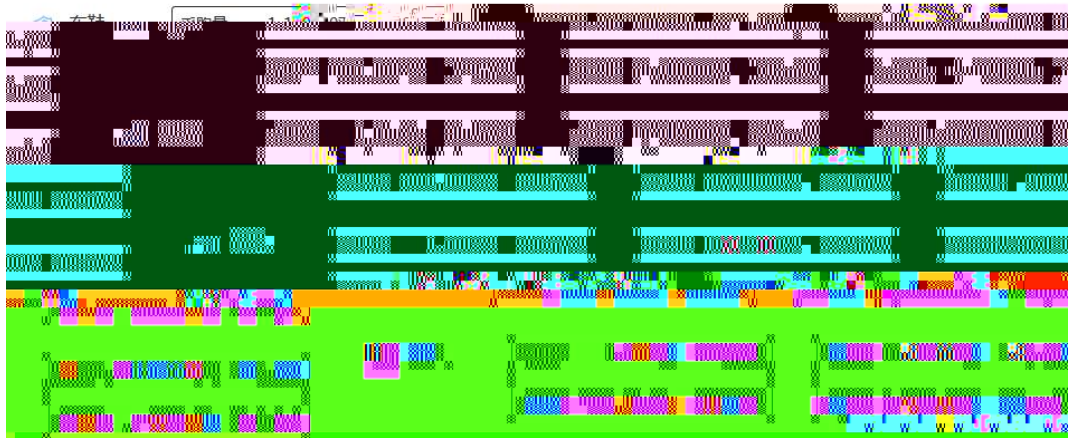
2)



### 选品参考数据：市场交易热度

 圈越大表示该品类商品越热销





4)

www.1000.com

www.1000.com

5

APP

6

1

2

	172. 16. 0. 131/	
	48	
	3 1	

3

90

4

10		10	6S 3 /3 /4	
90		10		
			A 2 2 2 4	
		10	5	
			5	
		10	5	
			2	
			3	
	APP	15	5 10	
		15	5 10	
		10	5 5	
	10	5 3 2		
	10	5 5		
		100		

11.

(10 )	10	0 /4 /6 /10	
(90 )	10	120*120 0 /4 /6 /8 /10	
	5	50 0 /1 /2 /3 /4 /5	
	5	0 /1 /2 /3 /4 /5	
	5	1 2 2	
		150 618 0 /5 /10 /15/20	
		1 200 0 /5 /10 /15/20	
	3G	5	
	20	0 /5 /10 /15/20	
	100		

12. 3-12

1

1

2

3 :

4

3-12

(10 )	10	0 /4 /6 /10	
(90 )	10	120*120 0 /4 /6 /8 /10	
	5	50 0 /1 /2 /3 /4 /5	
	5	0 /1 /2 /3 /4 /5	
	5	1 2 2	
		150 618 0 /5 /10 /15/20	
		1 200 0 /5 /10 /15/20	
	3G	5	
	20	0 /5 /10 /15/20	
	100		



13. 3-13

1

1

2

3 :

4

5 6.18 11

1

11 6.18

6

1

200

7 3G 10 3G

8

2

7 8 0 2007 P

CS6.0

GOOGLE48

://172.16.0.131/ /

3

(10 )	10	0 /4 /6 /10	
(90 )	10	120*120 0 /4 /6 /8 /10	
	5	50 0 /1 /2 /3 /4 /5	
	5	0 /1 /2 /3 /4 /5	
	5	1 2 2	
		150 618 0 /5 /10 /15/20	
		1 200 0 /5 /10 /15/20	
	3G	5	
	20	0 /5 /10 /15/20	
	100		

14. 3-14

1

1

2

3 :

4

5 6.18 11

1

11 6.18

6

1

200

7 3G 10 3G

8

2

7 8 0 2007 P

CS6.0 GOOGLE48

://172.16.0.131/ /

3

90

(10 )	10	0 /4 /6 /10	
(90 )	10	120*120 0 /4 /6 /8 /10	
	5	50 0 /1 /2 /3 /4 /5	
	5	0 /1 /2 /3 /4 /5	
	5	1 2 2	
	20	150 618 0 /5 /10 /15/20	
	20	1 200 0 /5 /10 /15/20	
	3G	5	
	20	0 /5 /10 /15/20	
	100		

15.

1

-15

1

2

3

:

4

5

6. 18

11

1

11

6. 18

6

1

200

7 3G

10

3G

81 \*

2

"

7

8

0

2007

P

(10 )	10	0 /4 /6 /10	
(90 )	10	120*120 0 /4 /6 /8 /10	
	5	50 0 /1 /2 /3 /4 /5	
	5	0 /1 /2 /3 /4 /5	
	5	1 2	
		2	
		150 618 0 /5 /10 /15/20	
	20	1 200 0 /5 /10 /15/20	
	3G	5	
	20	0 /5 /10 /15/20	
	100		

16. 3-16

1

1

2

3 :

4

5 6.18 11

1

11 6.18

6

1

200

7 3G 10 3G

8

2

7 8 0 2007 P

CS6.0

GOOGLE48

://172.16.0.131/ /

3

90

(10 )	10	0 /4 /6 /10	
(90 )	10	120*120 0 /4 /6 /8 /10	
	5	50 0 /1 /2 /3 /4 /5	
	5	0 /1 /2 /3 /4 /5	
	5	1 2 2	
		150 618 0 /5 /10 /15/20	
		1 200 0 /5 /10 /15/20	
	3G	5	
	20	0 /5 /10 /15/20	
	100		



17. 3-17

1

1

2

3 :

4

5 6.18 11

1

11 6.18

6

1

200

7 3G 10 3G

8

2

7 8 0 2007 P

CS6.0 GOOGLE48

://172.16.0.131/ /

3

90

(10 )	10	0 /4 /6 /10	
(90 )	10	120*120 0 /4 /6 /8 /10	
	5	50 0 /1 /2 /3 /4 /5	
	5	0 /1 /2 /3 /4 /5	
	5	1 2 2	
		150 618 0 /5 /10 /15/20	
		1 200 0 /5 /10 /15/20	
	3G	5	
	20	0 /5 /10 /15/20	
	100		

18. 3-18

1

1

2

3 :

4

5 6.18 11

1

11 6.18

6

1

200

7 3G 10 3G

8

2

7 8 0 2007 P

CS6.0 GOOGLE48

://172.16.0.131/ /

3

90

(10 )	10	0 /4 /6 /10	
(90 )	10	120*120 0 /4 /6 /8 /10	
	5	50 0 /1 /2 /3 /4 /5	
	5	0 /1 /2 /3 /4 /5	
	5	1 2	
		2	
		150 618 0 /5 /10 /15/20	
		1 200 0 /5 /10 /15/20	
	3G	5	
	20	0 /5 /10 /15/20	
	100		

19. 3-19

1

1

2

3 :

4

5 6.18 11

1

11 6.18

6

1

200

7 3G 10 3G

8

2

7 8 0 2007 P

CS6.0 GOOGLE48

://172.16.0.131/ /

3

90

(10 )	10	0 /4 /6 /10	
(90 )	10	120*120 0 /4 /6 /8 /10	
	5	50 0 /1 /2 /3 /4 /5	
	5	0 /1 /2 /3 /4 /5	
	5	1 2	
		2	
		150 618 0 /5 /10 /15/20	
	20	1 200 0 /5 /10 /15/20	
	3G	5	
	20	0 /5 /10 /15/20	
	100		

20. 3-20

1

1

2

3 :

4

5 6.18 11

1

11 6.18

6

1

200

7 3G 10 3G

8

2

7 8 0 2007 P

CS6.0

GOOGLE48

://172.16.0.131/ /

3

90

(10 )	10	0 /4 /6 /10	
(90 )	10	120*120 0 /4 /6 /8 /10	
	5	50 0 /1 /2 /3 /4 /5	
	5	0 /1 /2 /3 /4 /5	
	5	1 2	
		2	
		150 618	
		0 /5 /10 /15/20	
	20	1	
		200 0 /5 /10 /15/20	
3G	5		
	20	0 /5 /10 /15/20	
	100		



1. 4-1

1

1

7

1000

.

.

2010 4

5000

+

+

+

2

a.

---

b. 50

---

---

---

c. 10

---

d.

50

1		

e.

100

1		
2		
3		

f.

400

1			
2			
3			

g.


h.


3

2

7      8                      0      2007                      H      S

3

60

4

(      4-1)

# 4-1

	10	6S 0 /3 /5 0 /3 /5	
	5		
	5	10 1	
	5	2 1	
	5	2 3 10 1	
	10	4 6 20 1	
	40	4 36 40 1	
	10	2 8	
	10	2 8	
	100		

2. 4-2

1

1

[www.168gld.com](http://www.168gld.com)

1997 3 20

500

2017

2500

2

d.

50

1		

e.

100

1		
2		
3		

f.

400

1			
2			
3			

g.


h.


3

2

7 8 0 2007 H S

3

60

4

( 4-2)

4-2

		10	6S 0 /3 /5 0 /3 /5	
		5		
		5	10 1	
		5	2 1	
		5	3 10 1 2	
		10	4 6 20 1	
		40	4 36 40 1	
		10	2 8	
		10	2 8	
		100		

3. 4-3

1  
1

www.hnaijia.cn

1200

2014 03 18

49

17

4508

2

a.

---

b. 50

---

---

---

c. 10

---

d.

50

1		

e.

100

1		

2		
3		

f.

400

1			
2			
3			

g.


h.


3

2

7     8                    0     2007                    H     S

3

60

4

(     4-3)



4-3

		10	6S 0 /3 /5 0 /3 /5			
		5				
		5	10			
		5	1			
		5	2	1		
		5	2			
			3	10	1	
		10	4 6 20			
			1			
		40	4 36			
		40	1			
	10	2				
		8				
	10	2 8				
		100				

4. 4-4

1  
1

www.hnxffs.com

1996

AAA 2011

21

58

5088

336

35

50

66

20

165

CAD

2

6

7

41

1996

2008

ISO9001

ISO14001

2011

( )

2

a.

b.

50

---



---



---

c. 10

d.

50

1		

e.

100

1		
2		
3		

f.

400

1			
2			
3			

g.


h.


2

7 8 0 2007 H S

3

60

4

( 4-4)  
4-4

		10	6S 0 /3 /5 0 /3 /5	
		5		
		5	10	
		5	1	
		5	2 1	
		5	2 3 10 1	
		10	4 6 20 1	
		40	4 36 40 1	
		10	2 8	
		10	2 8	
		100		

5. 4-5

1  
1

www.cschanglong.com 1985  
2007

2007  
A 2008  
2012

2011 fs.changsha.cn  
2012

2

a.

---

b. 50

---

---

c. 10

---

d.

50

1		

e.

100

1		
2		
3		

f.

400

1			
2			
3			

g.


h.


3

2

7 8 0 2007 H S

3

60

4

( 4-5)

4-5

		10	6S 0 /3 /5 0 /3 /5	
		5		
		5	10 1	
		5	2 1	
		5	2 3 10 1	
		10	4 6 20 1	
		40	4 36 40 1	
		10	2 8	
		10	2 8	
		100		

6. 4-6

1  
1

<http://www.and169.com>

2006

5000

2

a.

---

b. 50

---

---

---

c. 10

---

d.

50

1		

e.

100



1		
2		
3		

f.

400

1			
2			
3			

g.


h.


3

2

7      8                      0      2007                      H      S

3

60

4

(      4-6)

4-6

		10	6S 0 /3 /5 0 /3 /5	
		5		
		5	10 1	
		5	2 1	
		5	2 3 10 1	
		10	4 6 20 1	
		40	4 36 40 1	
		10	2 8	
		10	2 8	
		100		

7. 4-7

1  
1

<http://www.csqstx.com>

-

2

a.

---

b. 50

---

---

---

c. 10

---

d.

50

1		

e.

100

1		
2		
3		

f.

400

1			
2			
3			

g.


h.


3

2

7      8                      0      2007                      H      S

3

60

4

(      4-7)

4-7

		10	6S 0 /3 /5 0 /3 /5	
		5		
		5	10 1	
		5	2 1	
		5	2 3 10 1	
		10	4 6 20 1	
		40	4 36 40 1	
		10	2 8	
		10	2 8	
		100		

8. 4-8

1  
1

<http://www.cstycb.com>

2016

10

2

a.

---

b. 50

---

---

c. 10

---

d.

50

1		

e.

100

1		
2		
3		

f.

400

1			
2			
3			

g.


h.


3

2

7 8 0 2007 H S

3

60

4

( 4-8)

4-8

		10	6S 0 /3 /5 0 /3 /5			
		5				
		5	10			
		5	1			
		5	2	1		
		5	2			
		5	3	10	1	
		10	4	6	20	
		40	1			
	40	4	36			
	40	1				
	10	2				
	10	8				
	10	2	8			
		100				



9. 4-9

1  
1

2016 3 22

3000

20

2

a.

---

b. 50

---

---

---

c. 10

---

d.

50

1		

e.

100

1		
2		
3		

f.

400

1			
2			
3			

g.


h.


3

2

7      8                      0      2007                      H      S

3

60

4

(      4-9

4-9

		10	6S 0 /3 /5 0 /3 /5			
		5				
		5	10			
		5	1			
		5	2	1		
		5	2	3	10	1
		10	20	1	4	6
		40	40	1	4	36
		10	8			2
	10	2			8	
		100				

10. 4-10

1  
1

www.bidanxi. com 2010 2012

3

21

50

2

a.

---

b.

50

---

---

---

c.

10

---

d.

50

1		

e.

100

1		
2		
3		

f.

400

1			
2			
3			

g.


h.


3

2

7      8                      0                      2007                      H                      S

3

4

( 4-10)

4-10

		10	6S 0 /3 /5 0 /3 /5			
		5				
		5	10			
			1			
		5	2 1			
		5	2	3	10	1
		10	4 6			
			20	1		
		40	4 36			
		40	1			
	10	2				
			8			
	10	2 8				
		100				

1. 5-1

1

1

58

1150 520 76900 9 30-  
12 30 14 00-18 30 19 30-23 00

2

3

2

7 8 0 2010

3

60

4

( 5-1)

5-1

10		10	<div>◆</div> <div>5</div> <div>600</div> <div>20</div> <div>1</div> <div>5</div>		
90		10	<div>◆</div> <div>◆</div> <div>◆</div> <div>◆</div> <div>2</div> <div>2</div> <div>3</div> <div>3</div>	1.	200
		20	<div>◆</div> <div>5</div> <div>4</div> <div>1.</div> <div>2</div> <div>2.</div> <div>10</div> <div>2</div> <div>20</div>	30000	1
		40	<div>◆</div> <div>10</div> <div>10</div> <div>10</div> <div>10</div> <div>1-4</div>	35	
		20	<div>◆</div> <div>4</div> <div>1</div> <div>5</div> <div>20</div>	5.	
			100		



2. 5-2

1

1

68

780

405

77030

9 30-12 00 13 00-18:00 19:00- 22 30

2

:

2

7 8 0 2010

3

60

4

( 5-2)

5-2

10		10	<div>◆</div> <div>5</div> <div>600</div> <div>20 1</div> <div>◆</div> <div>5</div>		
90		10	<div>◆</div> <div>2</div> <div>◆</div> <div>2</div> <div>◆</div> <div>200</div> <div>3</div> <div>1</div> <div>◆</div> <div>2.</div> <div>3</div>		
		20	<div>◆</div> <div>5</div> <div>4</div> <div>1.</div> <div>2</div> <div>2.</div> <div>30000</div> <div>1</div> <div>10</div> <div>2</div> <div>20</div> <div>3</div> <div>20</div> <div>1</div> <div>4.</div>		
		40	<div>◆</div> <div>10</div> <div>◆</div> <div>10</div> <div>◆</div> <div>10</div> <div>◆</div> <div>10</div> <div>◆</div> <div>1</div> <div>1-4</div>		
		20	<div>◆</div> <div>4</div> <div>1</div> <div>5</div> <div>20</div>		
		100			

3. 5-3

1

1

48

980

268

300000

10 00-14 00 16 00-23 00

2

:

2

7

8

0

2010

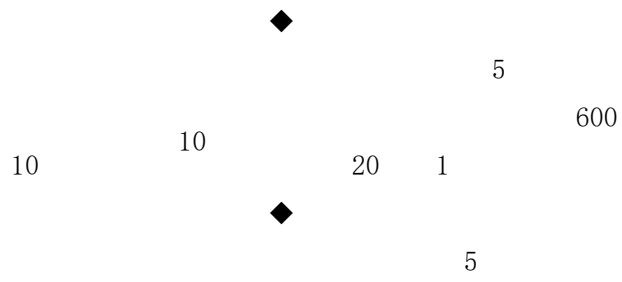
3

60

4

( 5-3)

5-3



1.

200

1

2.

30000

1

3

20

1

4.

35

5.

1

4. 5-4

1

1

68

1600

560

38900

8 30-12 00 14 00-17

30 18 30-22 30

2

:

2

7 8 0 2010

3

60

4

( 5-4)

5-4

10		10	◆ 5 600 20 1 ◆ 5		
		10	◆ ◆ ◆ ◆ 3 3	2 2 1. 200 1 2.	
		20	◆ 5 4 1. 2 2. 10 2 20	30000 1 3 20 1 4.	
90		40	◆ 10 ◆ 10 ◆ 10 ◆ 10 ◆ 1-4	35 5. 1	
		20	◆ 4 1 5 20		
			100		

5. 5-5

1

1

T

145

1500

732

13500

9 30-12 30 14 00-18 30 19 30-23

00

2

:

2

7

8

0

2010

3

60

4

( 5-5)

5-5

10		10	<div>◆</div> <div>5</div> <div>600</div> <div>20</div> <div>1</div> <div>5</div>		
90		10	<div>◆</div> <div>◆</div> <div>◆</div> <div>◆</div> <div>2</div> <div>2</div> <div>3</div> <div>3</div>	1.	200
		20	<div>◆</div> <div>5</div> <div>4</div> <div>1.</div> <div>2</div> <div>2.</div> <div>10</div> <div>2</div> <div>20</div>	30000	1
		40	<div>◆</div> <div>10</div> <div>10</div> <div>10</div> <div>10</div> <div>1-4</div>	35	
		20	<div>◆</div> <div>4</div> <div>1</div> <div>5</div> <div>20</div>	5.	
			100		



6. 5-6

1

1

2004

200

980

125

215000

9 30-12 30 14 00-18 30 19 30-23 00

2

:

2

7 8 0 2010

3

60

4

( 5-6)

5-6

10		10	<div>◆</div> <div>5</div> <div>600</div> <div>20 1</div> <div>◆</div> <div>5</div>		
90		10	<div>◆</div> <div>◆</div> <div>◆</div> <div>◆</div> <div>2</div> <div>2</div> <div>3</div> <div>3</div>	1.	200
		20	<div>◆</div> <div>5</div> <div>4</div> <div>1.</div> <div>2</div> <div>2.</div> <div>10</div> <div>2</div> <div>20</div>	30000	1
		40	<div>◆</div> <div>10</div> <div>◆</div> <div>10</div> <div>◆</div> <div>10</div> <div>◆</div> <div>10</div> <div>1-4</div>	35	
		20	<div>◆</div> <div>4</div> <div>1</div> <div>5</div> <div>20</div>	5.	
		100			

7. 5-7

1

1

65

780

110

340000

10 00-14 00 16 00-23 00

2

:

2

7 8 0 2010

3

60

4

( 5-7)

5-7

10		10	<div>◆</div> <div>5</div> <div>600</div> <div>20</div> <div>1</div> <div>5</div>		
		10	<div>◆</div> <div>◆</div> <div>◆</div> <div>◆</div> <div>2</div> <div>2</div> <div>3</div> <div>3</div>	1. 200 1 2.	
		20	<div>◆</div> <div>5</div> <div>4</div> <div>1.</div> <div>2</div> <div>2.</div> <div>10</div> <div>2</div> <div>20</div>	30000 1 3 20 1 4.	
90		40	<div>◆</div> <div>10</div> <div>◆</div> <div>10</div> <div>◆</div> <div>10</div> <div>◆</div> <div>10</div> <div>◆</div> <div>1-4</div>	35 5. 1	
		20	<div>◆</div> <div>4</div> <div>1</div> <div>5</div> <div>20</div>		
			100		

8. 5-8

1

1

170

260

870

26100

9 30-12 00 13 00-18:00 19:00- 22 30

2

:

2

7 8 0 2010

3

60

4

( 5-8)

10		10	<div> <div>◆</div> <div>5</div> <div>600</div> <div>20</div> <div>1</div> <div>5</div> </div>	<div> <div>1.</div> <div>200</div> <div>1</div> <div>2.</div> <div>30000</div> <div>1</div> <div>3</div> <div>20</div> <div>1</div> <div>4.</div> <div>35</div> <div>5.</div> <div>1</div> </div>	
90		10	<div> <div>◆</div> <div>2</div> <div>2</div> <div>3</div> <div>3</div> </div>		
		20	<div> <div>◆</div> <div>5</div> <div>4</div> <div>1.</div> <div>2</div> <div>2.</div> <div>10</div> <div>2</div> <div>20</div> </div>		
		40	<div> <div>◆</div> <div>10</div> <div>10</div> <div>10</div> <div>10</div> <div>1-4</div> </div>		
		20	<div> <div>◆</div> <div>4</div> <div>1</div> <div>5</div> <div>20</div> </div>		
		100			

9. 5-9

1

1

80

980

280

52750

10 00-14 00 16 00-23

00

2

:

2

7 8

0 2010

3

60

4

( 5-9)





10. 5-10

1  
1

240 15600 78 170  
30-22 30 8 30-12 00 14 00-17 30 18  
2

:

2

7 8 0 2010

3  
60

4  
( 5-10)

10		10	<div> <div>◆</div> <div>5</div> <div>600</div> <div>20</div> <div>1</div> <div>5</div> </div>	<div> <div>1.</div> <div>200</div> <div>1</div> <div>2.</div> <div>30000</div> <div>1</div> <div>3</div> <div>20</div> <div>1</div> <div>4.</div> <div>35</div> <div>5.</div> <div>1</div> </div>	
90		10	<div> <div>◆</div> <div>2</div> <div>2</div> <div>3</div> <div>3</div> </div>		
		20	<div> <div>◆</div> <div>5</div> <div>4</div> <div>1.</div> <div>2</div> <div>2.</div> <div>10</div> <div>2</div> <div>20</div> </div>		
		40	<div> <div>◆</div> <div>10</div> <div>10</div> <div>10</div> <div>10</div> <div>1-4</div> </div>		
		20	<div> <div>◆</div> <div>4</div> <div>1</div> <div>5</div> <div>20</div> </div>		
		100			

